



Aluminium Lighting Company

Echalon raise and lower column



www.aluminium-lighting.com/echalon.htm

reduced weight

robust

low maintenance

long life

sustainable

For a lighter, brighter future

ALUMINIUM
**BEST
VALUE**

At the Aluminium Lighting Company (ALC), we believe our success comes from dedication to our core values. We pride ourselves on our teamwork-focused customer service, our operational excellence and the innovative nature of our products and services.

As the first company to introduce extruded aluminium lighting columns into the UK and the leading supplier of these products in the country, we are uniquely positioned to advise lighting engineers and consultants, architects, local authorities, railway operators and developers.

Our intelligently engineered aluminium outperforms other column types in terms of passive safety and ongoing maintenance costs, and doesn't even require painting. We provide a wide standard range along with more aesthetic bespoke options and offer whole-life cost savings and wide-ranging regulatory compliance.

Benefits across the board

All the benefits of aluminium and our manufacturing expertise apply equally to our range of market-leading lighting columns, traffic & rail signal poles, signposts, CCTV & communication masts and bespoke products:

Strength

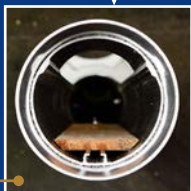
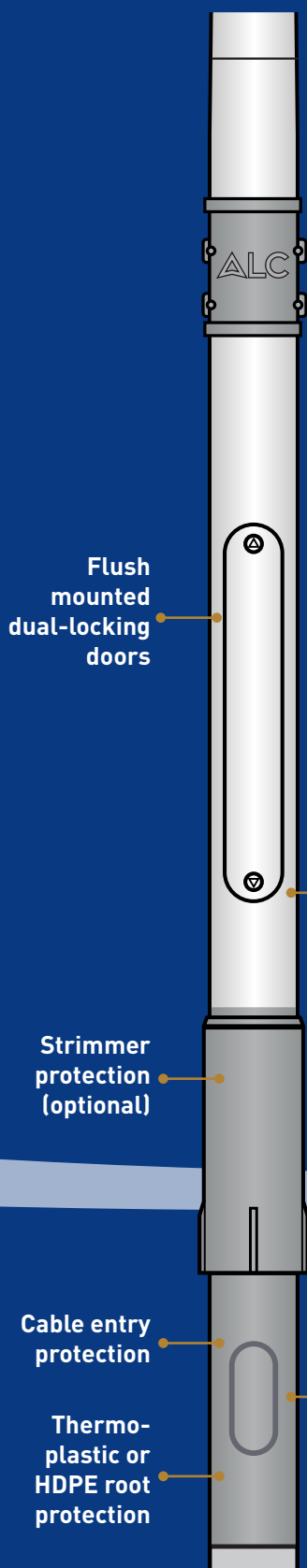
Any potential structural weakness near the door is negated by our unique use of type 5 press-stressed aluminium reinforcing tube inserts – a weld-free process that dramatically increases strength.

Quality of manufacture

With decades of experience and partnership with Nedal, one of Europe's leading suppliers of extruded aluminium products, ALC offers unbeatable quality that fits UK market needs.

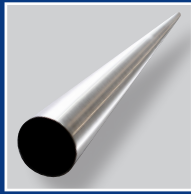
Bonding/welding

Our press-stressed inner sleeve reinforcement technology is weld-free and guarantees column strength. We use structural bonding for fixings/brackets and any welding that is undertaken is done to the highest technical standard by coded welders. We undertake rigorous weld calculations.



Nedal
ALUMINIUM





“Elegant, robust, reduced weight: no wonder our Echalon raise and lower column is taking the market by storm.”



Easy installation

Aluminium is far lighter than competing materials, making installation simpler, quicker and more cost effective. We apply cable entry guards to prevent chaffing on openings, and offer a column base protector.



50 year design life

Our columns far outlast those of our rivals (with a track record of over 65 years in the ground), and require no structural integrity surveying throughout their long design life.



Extra features

An integrated DIN rail makes for easy adjustment of the wooden backboard, and our flush column doors are dual-locked with anti-tamper bolts. Strimmer protection and other features are available.



Case study:

The Dark Steps

Client: The Corporation of the City of London



Location: Thameside, Lower Thames Street, London.

Key fact: Bespoke 3.5m Raise & Lower lighting column

ALC benefits: 50 year design life, minimal maintenance, environmentally friendly

Client scheme

Relighting on the terrace (known as the Dark Steps) called for a unique lighting column which would allow maintenance to be carried out safely within H&SE legislation.

The Corporation of London needed a lighting column that could be lowered and raised without the need for any exterior tools. The column also had to be:

- light weight for installation purposes;
- durable;
- require minimal maintenance; and
- tick the environmental box as well.

ALC

Understanding the clients requirement allowed ALC to design our Echalon R&L column to meet all the requirements and the project's stringent detail. Having our own Design & Technical Dept meant, we could produce prototypes for client sign off before going into full production.

ALC hinged columns are safely operated by one person. They are light for lifting and transportation. They require little maintenance.

Once production commenced, we were able to control and quality test each column at all stages throughout their manufacture, giving the client full confidence that their products were fit for purpose.



“Working with a manufacturer who looked at the issue from my perspective and provided practical solutions was a real bonus on this scheme.”

Neil Arnold, Lighting Engineer
City of London





"These are light enough to carry into position. The Hinge mechanism is very simple to operate so we could fit the lanterns quickly and get the columns up with a minimum of fuss"

Matt Cunningham, from Emico



Case study:

Rail Stabling Yard

Client: Emico Ltd, on behalf of Network Rail

Location: Rail Stabling Yard, Brighton

Key fact: Bespoke 6m Raise & Lower lighting column

ALC benefits: One person operation, easy to install

Client scheme

Emico Ltd used the latest version of the best-selling ALC Echalon Hinge at a major installation at the Brighton Rail Yard.

They wanted to install the columns around the site because they were an ideal solution to the problems of installing and maintaining luminaires where there is limited space and access.

For this site (where touch potentials are an issue) the columns had to have an Abcote coating to minimise any exposed contact.

ALC

Understanding the client's requirements allowed ALC to apply a coating to our Echalon R&L column to meet the stringent detail for Network Rail.

Usually aluminium columns are supplied in their brushed natural state as there is no need for any corrosion protection, although ALC can supply in high gloss or other finishes.



Echalon

Raise & Lower columns

Easy, safe, controlled single person operation of our Echalon raise and lower column.

The Echalon Hinge is essential at sites where columns are difficult to access and there is limited space. One person can operate the hinge comfortably. The hinge is carefully designed to assist the operator using it. The column itself is much lighter than steel columns.

Benefits from using our Echalon Hinge column

- Improved strength: we have greatly increased the capacity of the unit; this has been designed in, mainly for rail and export markets
- Improved appearance: the contours of the hinge have been smoothed out; the logo laser etched on the doors
- Easy to lift and raise: the hinge actually works with the operator when using the unit to both lower and raise the column; the tensioned spring takes the strain
- Ease of operation: there are no removable parts; there is no additional bulky or heavy equipment needed
- Safe working: the operator can safely work on any column attachment with the folded column locked in the horizontal position
- Use with all modern lanterns: the hinge can accommodate the vast range of different lantern weights, including those in export market
- Cable routing: the cable passes safely through the centre of the hinge; there is no possibility of damaging the cable when raising or lowering the column
- Long life components: all our springs are powder coated to extend their life
- Anti vandal door bolts: fitted as standard
- Ease of maintenance: we recommend light greasing when the hinge is lowered
- Single or Dual bracket with a column height up to 7 metres.



“No matter what your project, ALC has the column to match.”





Conical	Hockey	Stepped	Stepped Hockey Stick	Cylindrical
Height				
2.5m - 7m				
145 Base Diameter				
Column Top Diameter				
60, 76	42, 60, 76	60, 76	42, 60, 76	60, 76, 90, 145
Bracket outreach				
Up to 1m	300 – 1m	Up to 1m	300 – 1m	Up to 1m
Bracket Uplift				
5° - 15°				
Door Aperture				
600 x 100				

*Above valid only to subsequent standards and regulatory compliance being met.

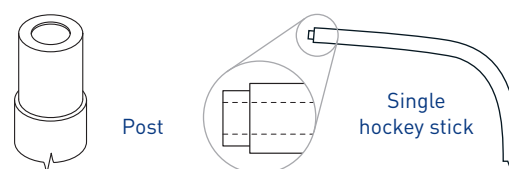
Mounting

Flange plate mounting is available as an alternative to a conventional root. Roots are treated with thermoplastic for protection, and trimmer protection is available when the column is to be situated on grass. HDPE coatings are available for electrolytical protection in contaminated areas.



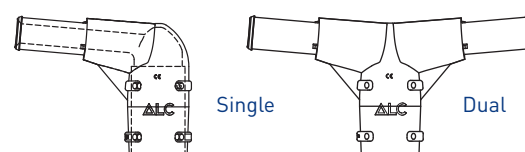
Top

We can supply standard post top mountings or an attractive curved hockey-stick style.



Bracket

We offer a range of brackets to match column and lantern type, all with safety and strength at the heart of their design. An unlimited range of bespoke, architectural bracket designs are also available as a service to customers. Our single and double-arm brackets feature structurally-bonded tube arms mounted on the post top.



Finish

We always recommend a natural aluminium brushed finish; on customer request we are able to provide a painted/anodized or electrostatic powder coated finish, in a large range of colours.



Key Attributes

- Best Value
- Robust
- Long Life
- Low Maintenance
- Passively Safe
- Sustainable
- Easy Selection

Call our customer service team on
+44 (0) 1639 852502

For more information please visit
www.aluminium-lighting.com/echalon.htm

UK and Ireland distribution partners:



Aluminium Lighting Company Limited
 Croeserw Industrial Estate, Eastern Avenue
 Cymmer, Port Talbot SA13 3PB

T: +44 (0) 1639 852502

F: +44 (0) 1639 852263

E: sales@alulight.co.uk

rail@alulight.co.uk

W: www.aluminium-lighting.com/echalon.htm



Oversees distribution partners:

Continental Europe



Declercq NV
 Zwaanhofweg 11, 8900 Ieper
 België

T: +00 32 5721 8750

F: +00 32 5721 8810

E: info@declercq.be

W: www.declercq.be



Nedal Aluminium B.V.
 Groenewoudsedijk 1
 3528 BG Utrecht

Postbus 2020

3500 GA Utrecht

T: +31 (0) 30 2925 711

F: +31 (0) 30 7601 400

E: lichtmasten@nedal.nl

North & South America



USA
 17315 Houston Drive
 Cypress, TX 77433

T: +1 281 758 4788

F: +1 832 201 8803

Canada
 9757 45th Avenue NW
 Edmonton AB T6E 5V8

T: +1 780 439 9192

F: +1 780 439 9596



Printed upon 100% recycled paper using environmentally friendly processes
 Designed and produced by Horizon Digital Media Ltd www.horizondml.co.uk

Echalon raise and lower column brochure - May 2015/01